

# MONTHLY MEMBERSHIP PROGRESS REPORT

LOCATION MARYLAND

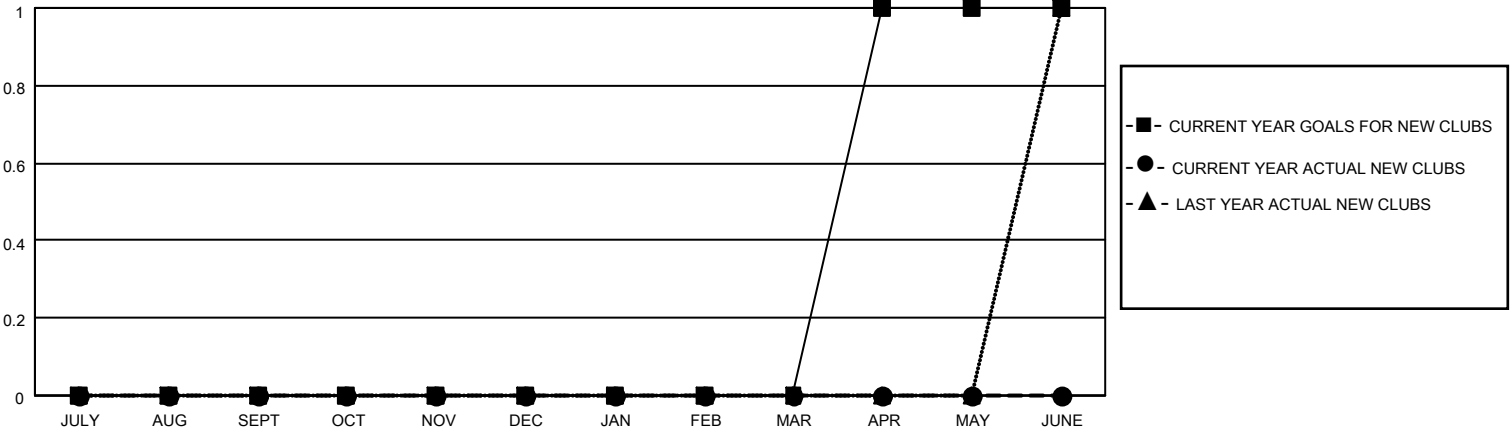
District 22 W

Results as of: 11/30/2020

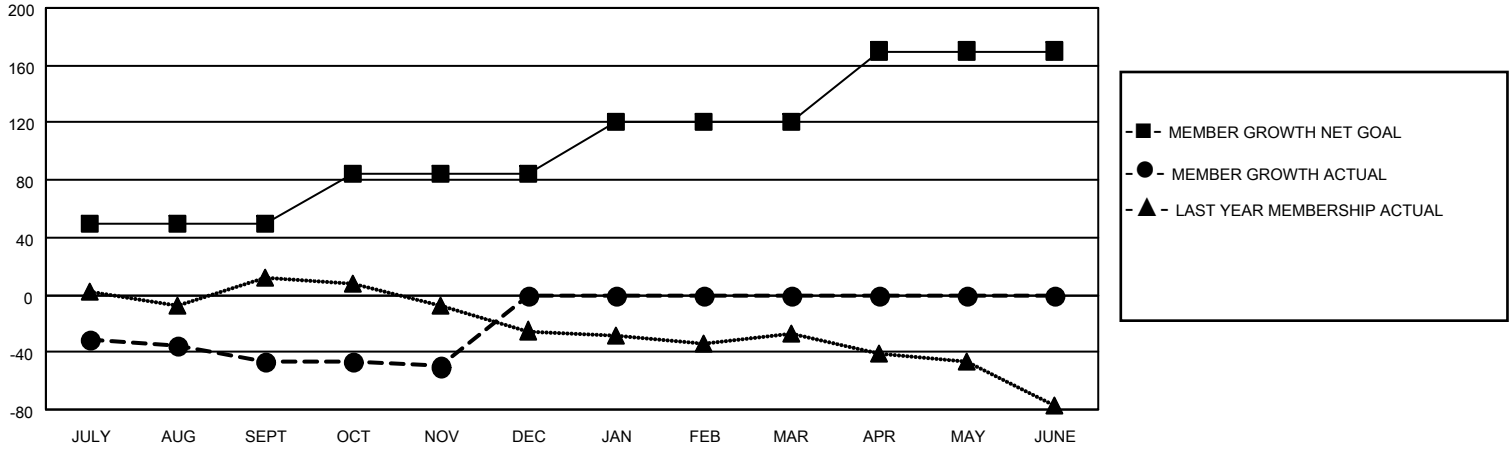
Clubs			
RESULTS FOR 2020-2021			
QUARTER	NEW CLUB GOAL	NEW CLUBS	DROPPED CLUBS
JULY/AUG/SEPT	0	0	1
OCT/NOV/DEC	0	0	1
JAN/FEB/MAR	0	0	0
APR/MAY/JUNE	1	0	0

Members			
RESULTS FOR 2020-2021			
QUARTER	MEMBER GROWTH NET GOAL	MEMBER GROWTH ACTUAL	DROPPED MEMBERS ACTUAL (including transfers)
JULY/AUG/SEPT	50	21	64
OCT/NOV/DEC	35	25	27
JAN/FEB/MAR	35	0	0
APR/MAY/JUNE	50	0	0

**GOALS AND ACTUAL NEW CLUBS CUMULATIVE**



**GOALS AND ACTUAL MEMBERS CUMULATIVE**



<b>DROPPED CLUBS: 2</b>	16 CLUBS OF 57 ADDED 1 OR MORE NEW MEMBERS	<b><u>GENDER DISTRIBUTION</u></b> MALE            1,108 (63.17%) FEMALE          646 (36.83%)
<b><u>DROPPED MEMBERS</u></b> DECEASED            17 CLUB CANCELLED      0 OTHER                 74 <hr/> TOTAL                 91	<a href="#">CLICK HERE FOR CUMULATIVE MEMBERSHIP DATA</a>	TOTAL FAMILY UNIT MEMBERS            487  FAMILY MEMBERS PAYING HALF DUES            254